

Detecting Cancers Earlier Improves Patient Outcomes



Earlier cancer detection improves survival rates and quality of life. To date, however, early detection technology hasn't existed for most cancers, or has been targeted to only a narrow high risk population. Limited early detection tools have contributed to high rates of late stage diagnosis, including in lung, stomach and pancreatic cancers, and have resulted in worse clinical outcomes.

	Annual Deaths	Lack of Screening	Stage IV Diagnoses
Lung*	135,000 deaths/year	Only available for limited population	40%
Pancreatic	11,000 deaths/year	Limited, due to lower incidence	53%
Stomach	47,000 deaths/year	No recommended early screening tests	36%

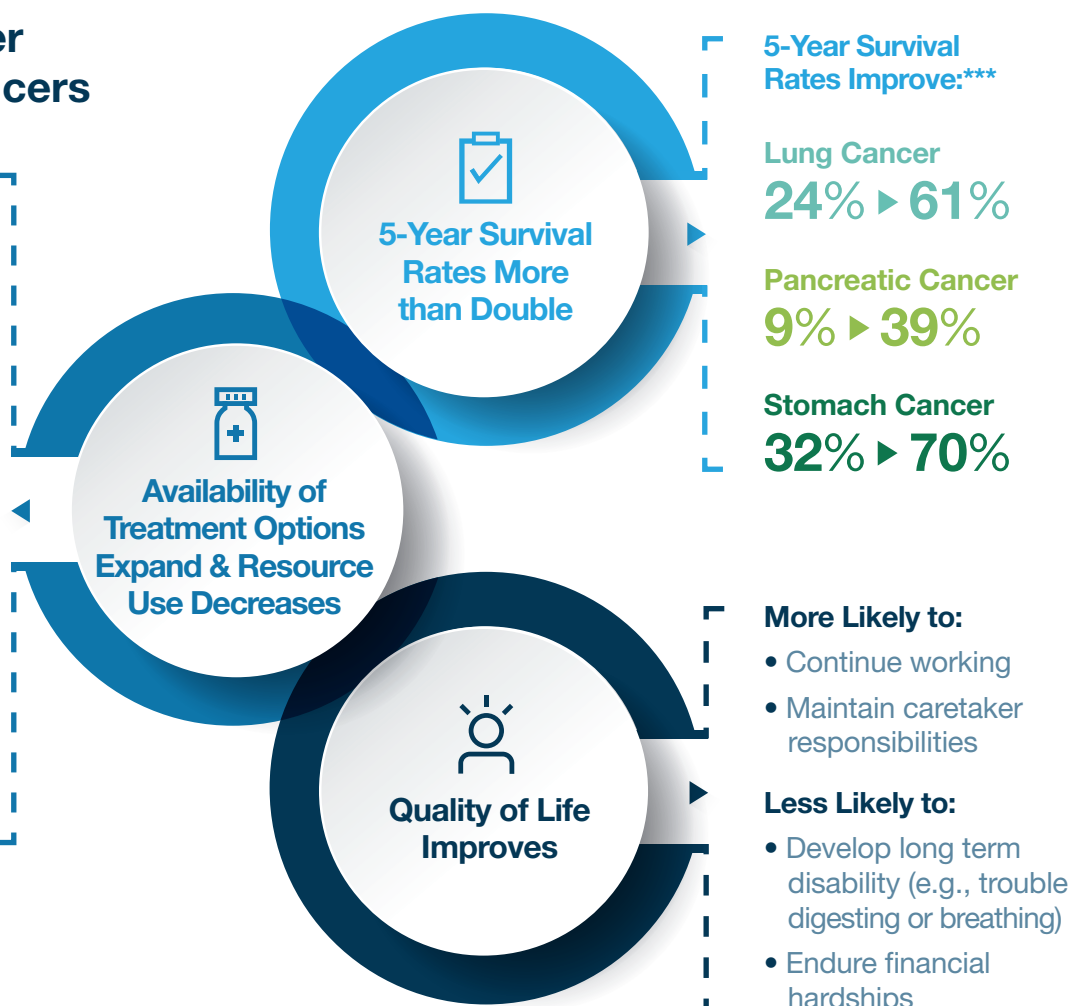
Benefits of Earlier Detection of Cancers

Earlier stage diagnoses allow for earlier use of interventions and a greater likelihood of benefit:

- Targeted Therapies
- Radiation
- Immunotherapy
- Surgery

Earlier-stage diagnoses have potential to reduce costs of cancer care:

Stage IV diagnoses of lung and stomach cancer are nearly 2/3 more costly than diagnoses in stage I



*NSCLC: Non-Small Cell Lung Cancer

**Stage III-IV diagnosis versus stage I-II diagnosis